

# Custom Muffler Components

## Louver Cores

### 18 Gauge Mild Steel

Tube OD	Overall Length	Louver Length	Description	Part Number	Retail
1 3/4	12	10	Spiral Cut Louver Core, 1" blank each end	MU-LC175-18MS	\$ 18.52
2	12	10	Spiral Cut Louver Core, 1" blank each end	MU-LC200-18MS	\$ 20.07
2 1/4	12	10	Spiral Cut Louver Core, 1" blank each end	MU-LC225-18MS	\$ 20.07
2 1/2	12	10	Spiral Cut Louver Core, 1" blank each end	MU-LC250-18MS	\$ 20.07
3	12	10	Spiral Cut Louver Core, 1" blank each end	MU-LC300-18MS	\$ 24.46

### 18 Gauge 304 Stainless Steel

Tube OD	Overall Length	Louver Length	Description	Part Number	Retail
1 3/4	12	10	Spiral Cut Louver Core, 1" blank each end	MU-LC175-18SS	\$ 25.11
2	12	10	Spiral Cut Louver Core, 1" blank each end	MU-LC200-18SS	\$ 34.00
2 1/4	12	10	Spiral Cut Louver Core, 1" blank each end	MU-LC225-18SS	\$ 34.00
2 1/2	12	10	Spiral Cut Louver Core, 1" blank each end	MU-LC250-18SS	\$ 34.00
3	12	10	Spiral Cut Louver Core, 1" blank each end	MU-LC300-18SS	\$ 48.91

## Perforated Cores

### 20 Gauge 304 Stainless Steel - 1/16" hole x 1/8" staggered centers

Fits Tube OD	Open Area Perf	Length	Description	Part Number	Retail
2	23% open	10	Slips inside 2" - 16g tubing	MU-PC200-20SS	\$ 30.61
2 1/4	23% open	10	Slips inside 2.25" - 16g tubing	MU-PC225-20SS	\$ 35.09
2 1/2	23% open	10	Slips inside 2.50" - 16g tubing	MU-PC250-20SS	\$ 35.09
3	23% open	10	Slips inside 3" - 16g tubing	MU-PC300-20SS	\$ 49.57

## Muffler Bodies

### 18 Gauge 304 Stainless Steel

Height	Width	Length	Description	Part Number	Retail
3 1/2	3 1/2	10	3.50" ROUND, Unwelded	MU-MBR3510-18SS	\$ 28.80
4	4	10	4.00" ROUND, Unwelded	MU-MBR410-18SS	\$ 28.80
3 1/2	8	12	3.5" x 8" OVAL, Unwelded	MU-MBO35812-18SS	\$ 43.79
4	8	12	4.0" x 8" OVAL, Unwelded	MU-MBO4812-18SS	\$ 43.79

## Muffler Internal Material

Thickness	Width	Length	Description	Part Number	Retail
NA	NA	NA	Acoustic Sport Packing, price per pound, bulk pack	MU-SSP	\$ 27.70
0.375"	12"	12" increments	Stainless Steel Wool, priced per foot	MU-SSW375	\$ 11.98

## Muffler Caps - Round

### 11 Gauge 304 Stainless Steel

Tube OD	Fits Diameter	Description	Part Number	Retail
1 3/4	3	1.765" ID center hole; 2.875" Diameter	MU-MPR175288-SS	\$ 7.65
2	3	2.015" ID Center Hole; 2.875" Diameter	MU-MPR200288-SS	\$ 7.65
2 1/4	3	2.265" ID Center Hole; 2.875" Diameter	MU-MPR225288-SS	\$ 7.65
2 1/2	3	2.515" ID Center Hole; 2.875" Diameter	MU-MPR250288-SS	\$ 7.65
No Hole	3 1/2	Solid end cap, 3.375" Diameter	MU-MPRNH338-SS	\$ 7.79
1 3/4	3 1/2	1.765" ID center hole; 3.375" Diameter	MU-MPR175338-SS	\$ 7.79
2	3 1/2	2.015" ID Center Hole; 3.375" Diameter	MU-MPR200338-SS	\$ 7.79
2 1/4	3 1/2	2.265" ID Center Hole; 3.375" Diameter	MU-MPR225338-SS	\$ 7.79
2 1/2	3 1/2	2.515" ID Center Hole; 3.375" Diameter	MU-MPR250338-SS	\$ 7.79
3	3 1/2	3.015" ID Center Hole; 3.375" Diameter	MU-MPR300338-SS	\$ 7.79
No Hole	4	Solid end cap, 3.875" Diameter	MU-MPRNH388-SS	\$ 7.99
1 3/4	4	1.765" ID center hole; 3.875" Diameter	MU-MPR175388-SS	\$ 7.99
2	4	2.015" ID Center Hole; 3.875" Diameter	MU-MPR200388-SS	\$ 7.99
2 1/4	4	2.265" ID Center Hole; 3.875" Diameter	MU-MPR225388-SS	\$ 7.99
2 1/2	4	2.515" ID Center Hole; 3.875" Diameter	MU-MPR250388-SS	\$ 7.99
3	4	3.015" ID Center Hole; 3.875" Diameter	MU-MPR300388-SS	\$ 7.99

# Custom Muffler Components

## Muffler Plates - Oval

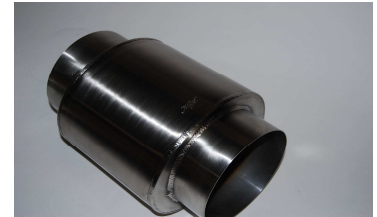
### 11 Gauge 304 Stainless Steel

Tube OD	Height	Width	Description	Part Number	Retail
2	3 1/2	8	2.015" ID, Offset Hole	MU-MPO351OH200-SS	\$ 14.24
2	3 1/2	8	2.015" ID, Center Hole	MU-MPO351CH200-SS	\$ 14.24
2	3 1/2	8	2.015" ID, 2 Holes	MU-MPO352H200-SS	\$ 15.10
2 1/4	3 1/2	8	2.265" ID, Offset Hole	MU-MPO351OH225-SS	\$ 14.24
2 1/4	3 1/2	8	2.265" ID, Center Hole	MU-MPO351CH225-SS	\$ 14.24
2 1/4	3 1/2	8	2.265" ID, 2 Holes	MU-MPO352H225-SS	\$ 15.10
2 1/2	3 1/2	8	2.515" ID, Offset Hole	MU-MPO351OH250-SS	\$ 14.24
2 1/2	3 1/2	8	2.515" ID, Center Hole	MU-MPO351CH250-SS	\$ 14.24
2 1/2	3 1/2	8	2.515" ID, 2 Holes	MU-MPO352H250-SS	\$ 15.10
3	3 1/2	8	3.015" ID, Offset Hole	MU-MPO351OH300-SS	\$ 14.24
3	3 1/2	8	3.015" ID, Center Hole	MU-MPO351CH300-SS	\$ 14.24
3	3 1/2	8	3.015" ID, 2 Holes (internal or external cap)	MU-MPO352H300-SS	\$ 15.10
3	3 1/2	8	3.015" ID, 2 Holes plus 2 vents (internal use only)	MU-MPO352HC300-SS	\$ 15.10
No Hole	3 1/2	8	Solid End Plate, No Holes	MU-MPO35NH-SS	\$ 14.24
2	4	8	2.015" ID, Offset Hole	MU-MPO41OH200-SS	\$ 14.24
2	4	8	2.015" ID, Center Hole	MU-MPO41CH200-SS	\$ 14.24
2	4	8	2.015" ID, 2 Holes	MU-MPO42H200-SS	\$ 15.10
2 1/4	4	8	2.265" ID, Offset Hole	MU-MPO41OH225-SS	\$ 14.24
2 1/4	4	8	2.265" ID, Center Hole	MU-MPO41CH225-SS	\$ 14.24
2 1/4	4	8	2.265" ID, 2 Holes	MU-MPO42H225-SS	\$ 15.10
2 1/2	4	8	2.515" ID, Offset Hole	MU-MPO41OH250-SS	\$ 14.24
2 1/2	4	8	2.515" ID, Center Hole	MU-MPO41CH250-SS	\$ 14.24
2 1/2	4	8	2.515" ID, 2 Holes	MU-MPO42H250-SS	\$ 15.10
3	4	8	3.015" ID, Offset Hole	MU-MPO41OH300-SS	\$ 14.24
3	4	8	3.015" ID, Center Hole	MU-MPO41CH300-SS	\$ 14.24
3	4	8	3.015" ID, 2 Holes (internal or external cap)	MU-MPO42H300-SS	\$ 15.10
3	4	8	3.015" ID, 2 Holes plus 2 vents (internal use only)	MU-MPO42HC300-SS	\$ 15.10
No Hole	4	8	Solid End Plate, No Holes	MU-MPO4NH-SS	\$ 14.24

## \*\*CLOSEOUT\*\* Ready to Run SS Race Mufflers \*\*CLOSEOUT\*\*

### Lightweight Racing Muffler, 22 Gauge 304 Stainless Steel, Elliptical Oval Body, Brushed Polish Finish

Inlet/Outlet	High x Wide x Long	Weight	Description	Part Number	Retail
3" ID	4" x 5" x 6"	2.50	Straight through w/SS wool wrap perf core, 10" OAL	MU-RM300-SS	OUT
3 1/2" ID	4.75" x 5.5" x 6"	2.85	Straight through w/SS wool wrap perf core, 10" OAL	MU-RM350-SS	\$ 80.00
4" ID	5" x 6.5" x 6"	3.15	Straight through w/SS wool wrap perf core, 10" OAL	MU-RM400-SS	OUT
4 1/2" ID	5.75" x 7" x 6"	3.40	Straight through w/SS wool wrap perf core, 10" OAL	MU-RM450-SS	\$ 100.00
5" ID	6" x 8" x 3"	2.75	Straight through w/SS wool wrap perf core, 7" OAL	MU-RM500-3-SS	\$ 120.00
5" ID	6" x 8" x 6"	3.75	Straight through w/SS wool wrap perf core, 10" OAL	MU-RM500-SS	\$ 120.00



## Mild Steel Weld-on Reversible Muffler

Perfect finish to a competition megaphone design. Raw finish 20 Gauge Mild Steel outer body with a stainless steel wool wrapper mild steel perf core is ready to be welded in place. The tapered internal perf core is unique in allowing you to choose a free flowing 2.50" inlet with a 3" outlet, or reverse it and use the 3" inlet and 2.50" outlet where additional back pressure is required. Overall length is 9".

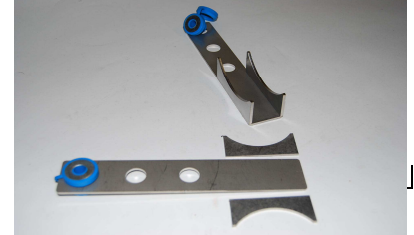
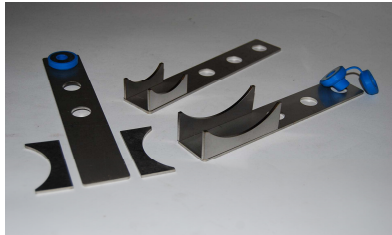
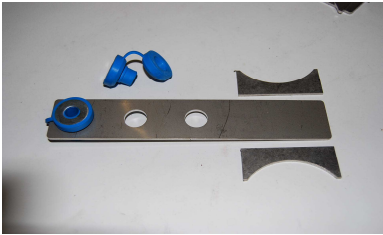
Small Diameter	Large Diameter	Body Diameter	Description	Part Number	Retail
2.50"	3"	3.625"	Straight through w/SS wool wrap perf core	MC-2530-RM	\$ 119.79

# Custom Muffler Components

## Automotive Hangers, Brackets and Grommets

11 Gauge 304 Stainless Steel, Weld-on

Tube OD	Width	Length	Description	Part Number	Retail
N/A	1 1/2	8	Main Hanger Bracket (for all size cradles)	MU-HANGER	\$ 16.64
2	1	2	Cradle, 2" OD Tubing, requires 2	MU-HANGER-200	\$ 7.83
2 1/4	1	2.12	Cradle, 2.25" OD Tubing, requires 2	MU-HANGER-225	\$ 8.04
2 1/2	1	2.25	Cradle, 2.50" OD Tubing, requires 2	MU-HANGER-250	\$ 8.09
3	1 1/8	2.711	Cradle, 3" OD Tubing, requires 2	MU-HANGER-300	\$ 9.34
3 1/2	1 1/4	3.4	Cradle, 4" OD Tubing, requires 2	MU-HANGER-350	\$ 10.86
4	1 1/4	3.4	Cradle, 4" OD Tubing, requires 2	MU-HANGER-400	\$ 10.86
N/A	N/A	N/A	2 pc (m/f) Rubber Grommet: 3/8" bolt x 1/2" bracket hole	MU-HANGER-GROM	\$ 5.32



CALL (714) 828-3580 or (800) 795-5535  
FOR WHOLESALE PRICING